



WBP / WAP SERIES

氣動水壓增壓幫浦 

Pneumatic Driven Water Boost Pump



KING AIR

“ Keep blazing new trails! ”

肯岳亞股份有限公司

KING AIR AUTOMATION CORPORATION

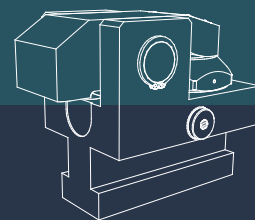
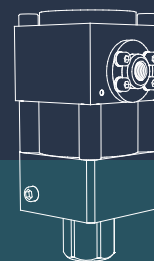
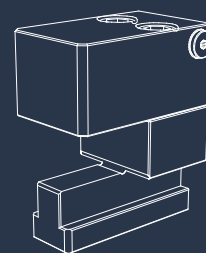
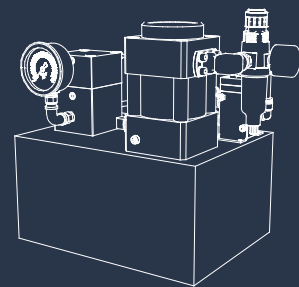
肯岳亞專業生產沖床用過負荷保護裝置，快速換模系統及模具物流自動管理系統。在您仔細端詳肯岳亞是如何將專業、技術、創新，落實在我們產品每個小地方，與實踐在品質服務細節之後，不以現狀滿足的肯岳亞，更積極研發能「提昇企業競爭力的有效工具」，創造出提升生產量的工具。為了您我們必須不斷創新及提升，以創造雙贏的企業版圖。

我們一向以使用者的安全及顧客的滿意服務為導向；力求技術的創新及提昇技術層面，肯岳亞秉持腳踏實地的樸實精神，在穩定中追求成長。並以謙虛與感激的心再接再厲，為提昇高品質，高水準的產品市場而努力不懈。以高品質、零缺點的事業態度，藉由全員自主管理，從半成品組裝製程到成品檢驗均落實品質規範，不斷提供自動化、高精度的商品。「滿足客戶的需求」一是我們最重要的目標。

KING AIR manufactures Overload Protector, Quick Die & Mold Change System, and Automatic Die Logistics Management System for more than 30 years. We not only implement the principles of knowledge, technique, and creativity to every product, and we also run after perfection of quality. Additionally, the perspective of not being content with what we have helps us actively develop more competitive products.

KING AIR are always focusing on the safety of operators and satisfaction of customers. We adhere to practical spirit having our feet on the ground and keep pursuing steady growth. Taking every detail seriously, each part of our goods are scrutinized before delivery. Striving for the highest standards, we promise to satisfy customers' demand and offer our best services to them.

Undoubtedly, when it comes to quick die & mold change system, KING AIR is second to none. We are able to provide supreme quality from the smallest components to the largest machines. We deeply believe KING AIR is the only and best choice for you!



水壓增壓幫浦 / Water Boost Pump

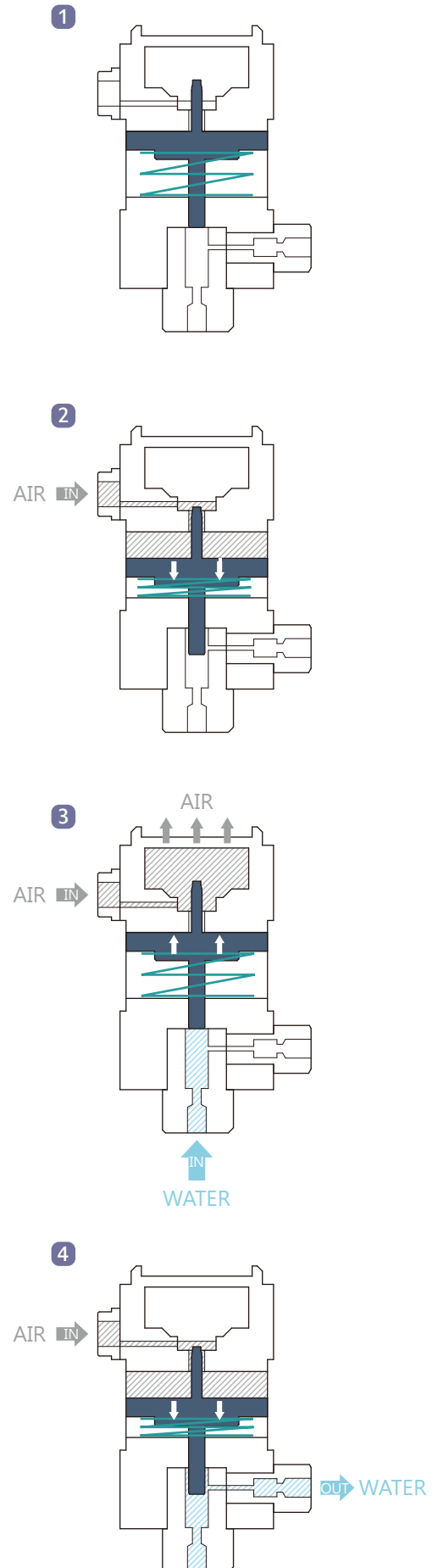
產品特色 / Product Features

- 利用空壓驅動，輸出高的水壓
Air driven water boost pump can generate high pressure
- 輸出水壓達設定壓力即停止動作，節省能源；若輸出壓力下降則自動補壓，具恆壓、保壓功能
When pressure reaches the set point, the water boost pump will stop, which can save energy; if the pressure drops, the water boost pump will resupply the pressure automatically, which can keep and maintain the pressure
- 臨時停電或空氣壓力消失時，水壓壓力仍能長時間保持，具安全、高效能等優點
While power outage is happening or air pressure is cut, the water boost pump can still keep the pressure. It has the advantages of safety and high efficiency
- 不同流量的幫浦可依需求搭配不同型式之迴路控制系統
According to customer demands, water boost pumps with different flow rate can be matched with different circuits control system
- 使用水作為壓力傳遞之介質，水資源取得容易且不易造成環境汙染
Use water to be a medium for pressure. Water is not only easy to get, but also do not create any environmental pollution
- 幫浦採用特殊材質製成，防止零件遇水生鏽
Pump is made of special material to keep from rusting by water

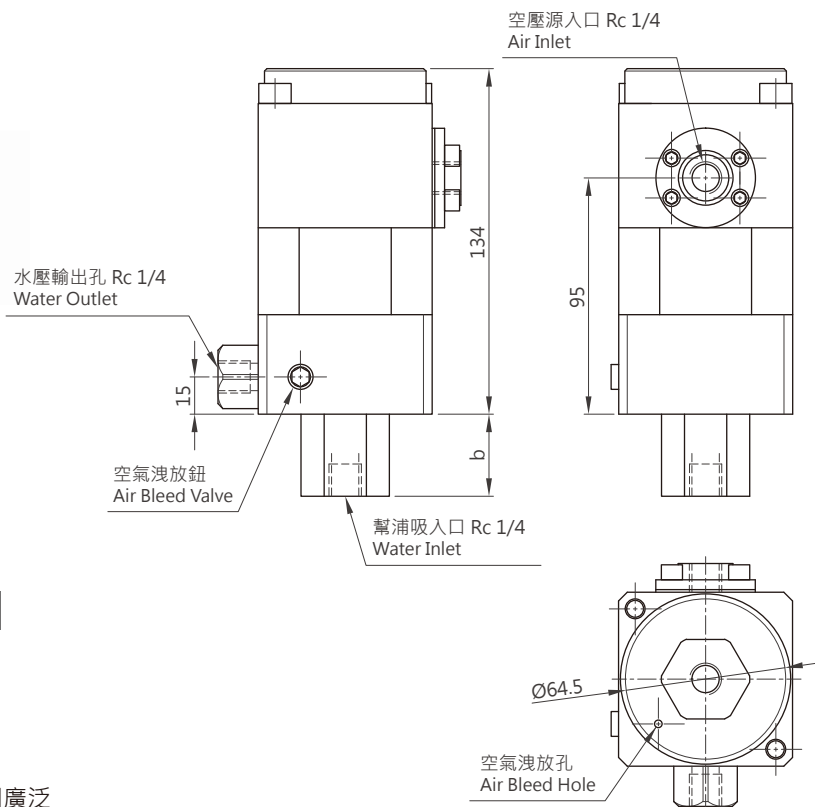
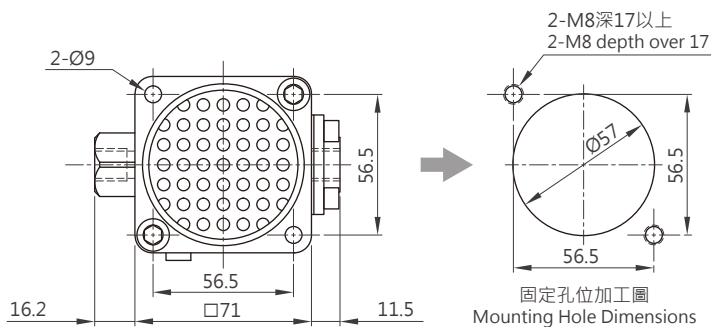
作動原理 / Operating Principle

水幫浦靜止時，活塞位於上方不動¹。開始進氣後，活塞因空壓，向下運動²。彈簧擠壓後伸長，支撐活塞向上運動，空氣排出。同時於吸水止逆閥座吸水³，當活塞再次向下運動時，水於輸出止逆閥座供給⁴。透過活塞來回的作動原理增加壓力，使水幫浦輸出較高的水壓。

When water boost pump is static, the piston stays upside.¹ After air imports to the pump, the piston is driven downward by the pneumatic pressure.² Then the spring rebounds to push piston up, and the air discharges. At the same time, the inlet check valve let water get into the pump.³ While the piston is moving down again, water will be output from the outlet check valve.⁴ The water boost pump outputs high water pressure through reciprocating motion of piston.



WBP 水壓增壓幫浦 / WBP Water Boost Pump



單位/Unit : mm

特性 / Features

- WBP系列為流量最基本的型式，使用範圍廣泛
WBP series is the standard type, and it can be used in wide range of applications

產品規格 / Specification

項目/Item	單位/Unit	WBP-12	WBP-17	WBP-27	WBP-49	WBP-62
流量/Flow ¹	cm ³ /min	2810	2350	1390	810	620
重量/Weight	kg			2.8		
空壓操作範圍/Pneumatic working pressure	kg/cm ²			3~5		
水吐出壓力/Water output pressure ²	kg/cm ²	A x 11.6	A x 16.7	A x 26	A x 46.3	A x 58.6
最高工作壓力/Highest working pressure	kg/cm ²	58	83.5	130	231.5	293
使用水/Water	-	蒸餾水或無雜質的純水/Distilled water or pure water without impurities				
b	mm	34.8			33	

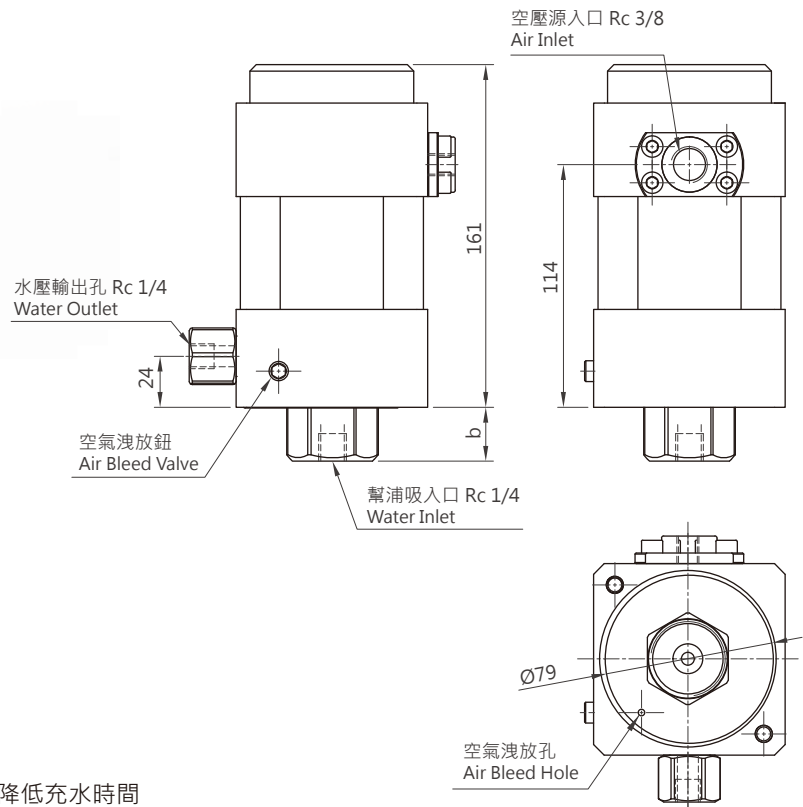
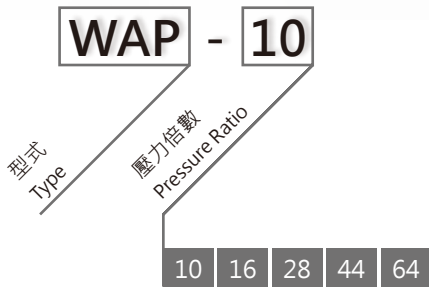
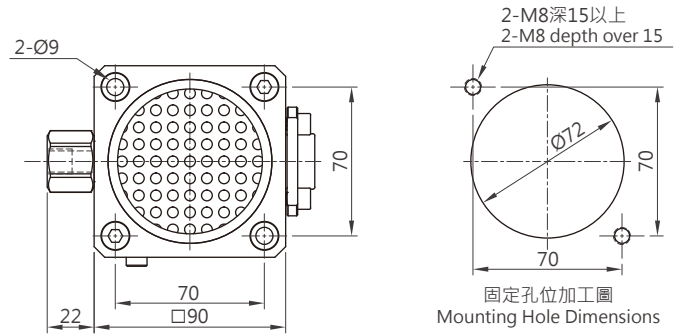
¹ 空壓壓力 = 5 kg/cm² (無負荷)
Pneumatic pressure = 5 kg/cm² (without load)

² 水吐出壓力為理論值 · A = 空壓操作壓力
Water output pressure is theoretical value
A = pneumatic working pressure

※ 可依需求訂製特殊流量及輸出壓力
Special flow and water output pressure on request



WAP 水壓增壓幫浦 / WAP Water Boost Pump



單位/Unit : mm

特性 / Features

- WAP系列增壓幫浦輸出流量較大，能有效降低充水時間
WAP series with higher flow can reduce the time of water-filled effectively

產品規格 / Specification

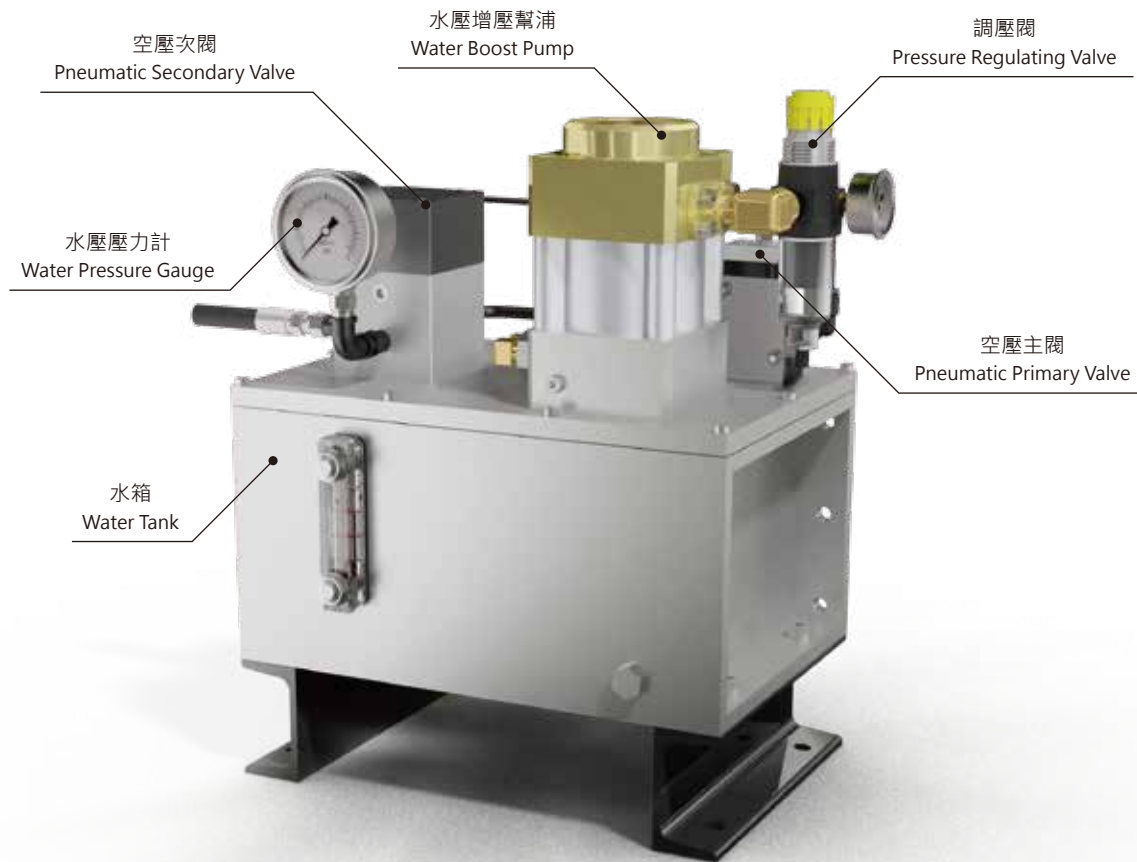
項目/Item	單位/Unit	WAP-10	WAP-16	WAP-28	WAP-44	WAP-64
流量/Flow ¹	cm ³ /min	5200	4000	2500	1700	1350
重量/Weight	kg	5.2				
空壓操作範圍/Pneumatic working pressure	kg/cm ²	3~5				
水吐出壓力/Water output pressure ²	kg/cm ²	A x 9.7	A x 15.2	A x 27	A x 42.2	A x 60.8
最高工作壓力/Highest working pressure	kg/cm ²	48.5	76	135	211	304
使用水/Water	-	蒸餾水或無雜質的純水/Distilled water or pure water without impurities				
b	mm	30			25	

¹ 空壓壓力 = 5 kg/cm² (無負荷)
Pneumatic pressure = 5 kg/cm² (without load)

² 水吐出壓力為理論值 · A = 空壓操作壓力
Water output pressure is theoretical value
A = pneumatic working pressure

※ 可依需求訂製特殊流量及輸出壓力
Special flow and water output pressure on request

動力單元 / Power Unit



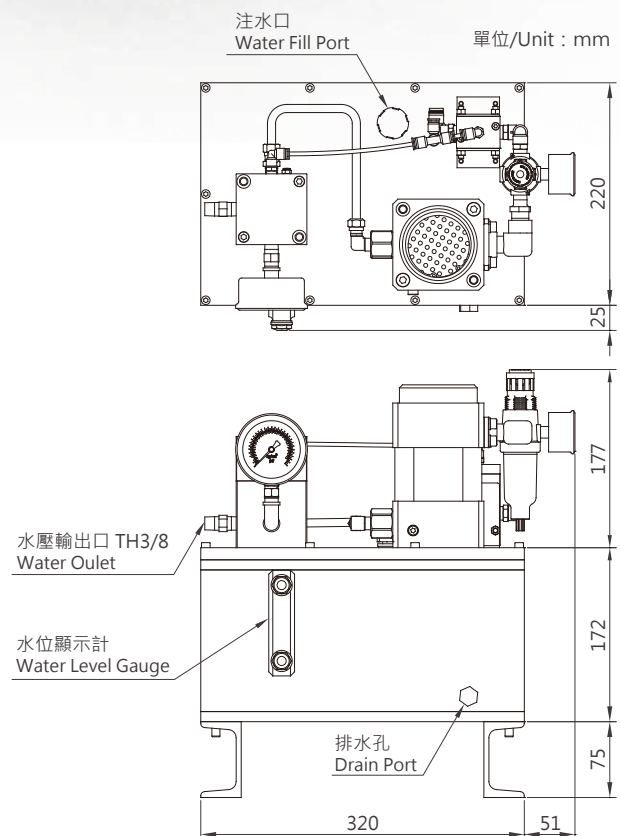
特性 / Features

此動力單元由水壓增壓幫浦和一迴路水壓控制閥組成，可任意控制幫浦水壓輸出，其中配有零內漏閥裝置，可長時間保持穩定的壓力，確保安全。

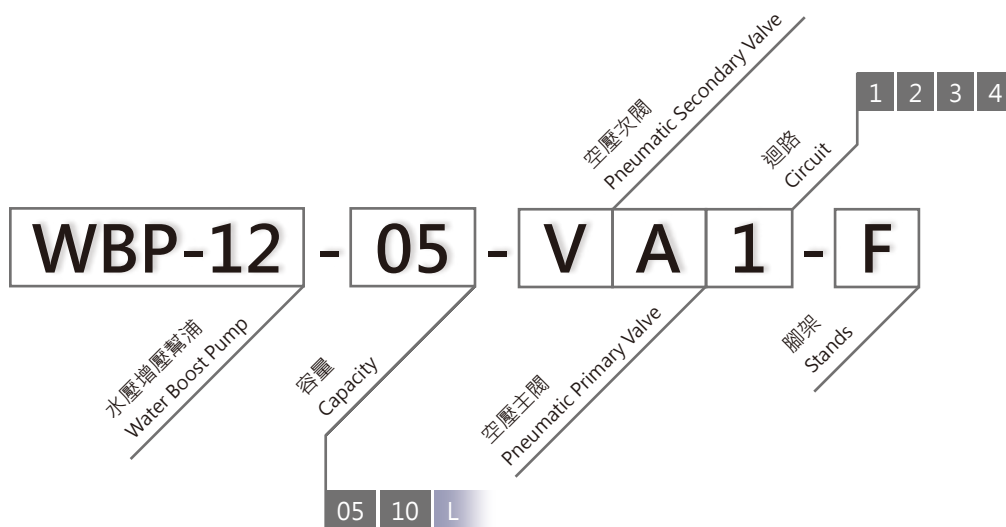
The power unit is composed of a water boost pump and a circuit of water control valve. It can control the output of water boost pump. There is a non-leak valve in power unit, which keeps the pressure stabilized for a long time and ensures the safety in operation.

※ 圖面尺寸為水箱5L之規格

The picture shows the water tank with volume of 5 liters



型號表示方法 / Nomenclature



相關配件 / Accessories

基本配件 / Basic Accessories

濾油管/Oil Filter

包含一只無縫鋼管及一只濾油網
It contains a seamless steel tube and a strainer



螺絲/Screw

包含兩只M8有頭內六角螺絲
It contains two M8 hex socket cap screws



選配 / Options

水箱/Water Tank

包含5L和10L兩種規格
It contains two standards, 5L and 10L



調壓閥/Pressure Regulating Valve

調整主氣源壓力大小
To adjust the pressure of air supply



水壓壓力計/Water Pressure Gauge

顯示水源供給壓力
To show the water output pressure



空壓主閥/Pneumatic Primary Valve

控制主氣源開關
A control switch of air supply



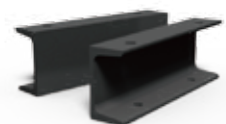
空壓次閥/Pneumatic Secondary Valve

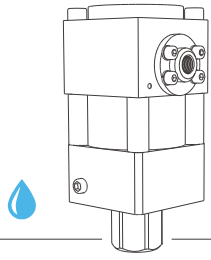
水源供給開關
A control switch of water output



腳架/Stands

架高動力單元·提升排水的便利性·腳架含固定孔·方便固定
To elevate the power unit, they will make the water in tank easy to drain. Stands with mounting holes can be fixed easily





肯岳亞股份有限公司

KING AIR AUTOMATION CORPORATION

40849 台中市南屯區文山北巷1-5號
40849 No. 1-5 Wenshan N. Lane Nantun District, Taichung, Taiwan
TEL: +886-4-2387-6060
FAX: +886-4-2387-6161
Email: sales@king-air.com.tw
<http://www.king-air.com.tw>

